



# DIAMOND DRILLING SYSTEMS

Bringing speed, safety,  
and simplicity to every  
jobsite



# CHOOSE THE RIGHT DIAMOND CORE DRILL FOR YOUR JOB

## DD 30-W



**Range Diameter Coring:** 8 to 35 mm

**Power:** >2,5 kW | **Chuck Type:** C+ | **Wet**

## DD 150-U-22



**Range Diameter Coring:** 52 to 162 mm

**Power:** >2,5 kW | **Chuck Type:** BI | **Wet and Dry**

## DD 150-U



**Range Diameter Coring:** 8 to 162 mm

**Power:** >2,5 kW | **Chuck Type:** BI - BS | **Wet and Dry**

## DD 250-CA



**Range Diameter Coring:** 12 to 500 mm

**Power:** >2,5 kW | **Chuck Type:** BI - BS | **Wet**

## DD 350-CA



**Range Diameter Coring:** 52 to 500 mm

**Power:** >2,5 kW | **Chuck Type:** BL - BS | **Wet**

## DD 500-CA



**Range Diameter Coring:** 82 to 600 mm

**Power:** >2,5 kW | **Chuck Type:** BS | **Wet**

### SPX-T

abrasive core bit



### SPX-L

abrasive core bit



### SPX-L

hand-held core bit



### SPX-A

speed core bit



● ● ● ● ●  
ULTIMATE

### SP-L

abrasive core bit



### SP-H

core bit



● ● ● ● ○  
PREMIUM



# DISCOVER PRECISION WITH HILTI DIAMOND CORING TOOLS



Optimize your construction projects with the help of our diamond coring tools, designed for speed, precision, and durability. From serial drilling applications, small to large diameters, hand-held or rig-based, cordless or corded, you will find the right solution for your needs.

Find the ideal diamond coring tool, insert and accessories for your project and take your performance to the next level.

- Tailored solutions
- Reliable performance
- Expert support
- Safety first
- Environmental responsibility
- Data-driven decisions

## MAXIMIZE EFFICIENCY WITH THE HELP OF TOOL FLEET MANAGEMENT



### Fleet Management

Take advantage of Hilti's Fleet Management for your diamond tools.

Enjoy hassle-free tool maintenance, replacements, and logistics, ensuring you always have the right tools at hand so you can focus on your projects.

1. Productivity focus
2. Flexible tool selection
3. Tool maintenance and upgrades
4. Fixed monthly costs
5. Theft coverage
6. Custom invoices

[LEARN MORE >](#)



# HILTI WATER MANAGEMENT SYSTEM FOR CLEANER AND FASTER DRILLING



## Up to 40% faster core drilling with the Water Management System DD-WMS 100 with Bluetooth.

This versatile system pairs seamlessly with Hilti's diamond core drills, providing efficient water supply, wastewater collection, and filtration. It operates in three modes: recycling, vacuum cleaning, and water supply, ensuring a full day of water autonomy by recycling water up to seven times. Help minimize downtime and keep your jobsite cleaner and more efficient with Hilti.

Filling volume:

14

Supplied water volume per filling:  
100



[SHOP NOW >](#)

HILTI

WATER MANAGEMENT  
SYSTEM



[WATCH VIDEO](#)

Water  
Management  
System

## CUT ASSIST TECHNOLOGY

Guidance and automation on the jobsite

The Cut Assist Auto Feed Unit enhances your rig-based diamond coring systems, enabling you to tackle serial drilling, corner holes, large diameters, and more with unmatched precision and speed.

- Automatic surface detection and optimized power application.
- Adapts to changes in base material for enhanced performance.



Auto Feed Unit



DD 250-CA  
CORE DRILL



[WATCH VIDEO](#)

Cut Assist  
Technology



HILTI

Hilti Australia

131 292 | [www.hilti.com.au](http://www.hilti.com.au)



# DD 30-W

**Operation mode:** Hand-held and rig-based drilling system

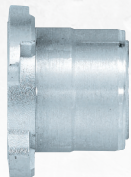
**Coring:** Wet



Ø **Range Diameter Coring**  
(8 to 35 mm)

**Chuck Type:**

C+



**Core bit type**

**SPX-T**

Ultimate core bit for coring in all types of concrete



Concrete >

**Drilling Stand**  
**DD-ST 30**





# DD 150-U

**Operation mode:** Hand-held and rig-based drilling system

**Coring:** Wet and Dry



## Drilling Stand

### DD-ST 150-U CTL

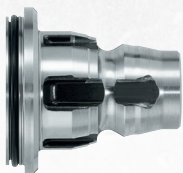
Drill stand with combined anchor and vacuum base plate and column with angular coring up to 45°



Ø **Range Diameter Coring**  
(8 to 162 mm)

## Chuck Type:

BI+



## Auto Feed Unit (120V)

### DD AF-CA L



## Core bit type

### SPX-L

#### X-Change

Ultimate core bit with X-Change Module for faster, smoother coring



The X-Change Module system is an innovative design featuring a central barrel and interchangeable segments for quicker, easier core bit exchanges.

Concrete >

Ultimate



### SPX-L X-Change Module

Concrete module >



### X-Change Core Bit Barrel

BI+ Barrel >

BS Barrel >

### SPX-L

#### Hand-held

Ultimate core bit for hand-held coring



Working length 12 in. Designed for use with hand-held drills.

Concrete >

Premium

### SP-L

#### Premium core bit



Concrete >



Hilti Australia

131 292 | www.hilti.com.au



# DD 150-U 22

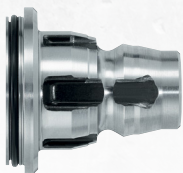
**Operation mode:** Hand-held and rig-based drilling system

**Coring:** Wet and Dry



Ø **Range Diameter Coring**  
(52 to 162 mm in concrete)  
(Up to 252 mm in masonry)

**Chuck Type:**  
**BI+**



## Core bit type

**SPX-A**  
Speed Core bit



Concrete & Masonry >

**Recommended Battery**  
**B 22-290**

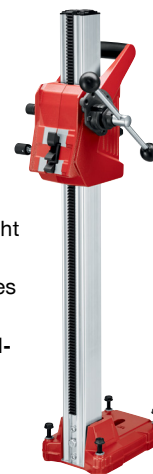


**Recommended Charger**  
**C 8-22**



**Drilling Stand**  
**DD-ST 22**

Compact and lightweight  
core drill stand for Hilti  
cordless coring machines  
**Fixation mode:** Anchor  
**Angular coring:** No **Col-  
umn extension:** Yes



**Drilling Stand**  
**DD-ST 150-U CTL**

Drill stand with com-  
bined anchor and  
vacuum base plate and  
column with angular  
coring up to 45°





# DD 250-CA

**Operation mode:** Rig-based drilling system

**Coring:** Wet



Ø **Range Diameter Coring**  
(12 to 500 mm)

**Chuck Type:**

BL



BS



**Auto Feed Unit (240V)**  
**DD AF-CA H**



**Drilling Stand and optional Wheel Set**

**DD-HD 30-CA**

Angular drilling – easy, adjustment up to 45°



**Core bit type**

Premium

**SP-H**

Premium core bit for coring in all types of concrete



Concrete >



# DD 350-CA

**Operation mode:** Rig-based drilling system

**Coring:** Wet



Ø **Range Diameter Coring**  
(52 to 500 mm)

**Chuck Type:**

BL



BS



**Auto Feed Unit**  
**DD AF-CA**



**Drilling Stand and optional Wheel Set**

**DD-HD 30**

Angular drilling –  
easy, adjustment  
up to 45°



**Core bit type**

Premium

**SP-H**

Premium core bit for coring in all types of concrete



Concrete >



Hilti Australia

131 292 | [www.hilti.com.au](http://www.hilti.com.au)



# DD 500-CA

**Operation mode:** Rig-based drilling system

**Coring:** Wet



Ø **Range Diameter Coring**  
(82 to 600 mm)

**Chuck Type:**

**BS**



**Auto Feed Unit**  
**DD AF-CA**



**Drilling Stand and optional Wheel Set**

**DD-HD 30**

Angular drilling –  
easy, adjustment  
up to 45°



**Core bit type**

**Premium**

**SP-H**

Premium core bit for coring in all types of concrete



**Concrete >**



Hilti Australia

131 292 | [www.hilti.com.au](http://www.hilti.com.au)



# ACCESSORIES

## Extensions

**BI**

304.8 mm Length | Diameter 55 mm | Made of steel



**BL**

304.8 mm Length | Diameter 60 mm | Made of steel



**BS**

203.2 mm Length | Diameter 46.7 mm | Made of steel



**BS**

508 mm Length | Diameter 46.7 mm | Made of steel



**BS**

304.8 mm Length | Diameter 46.7 mm  
Made of aluminum



## Adapters

**BI to BS/BR**



**BL to BS**



**BL to BU**



**BS to BI**



**BS to BL**



**BU to BL**



## Accessories



### Vacuum pump (240V) DD VP-U

Vacuum pumps for fastening diamond drilling systems without need for drilling and anchoring.

For use with: DD 30-W, DD 150-U, DD 250, DD 250-CA, DD 350-CA, and DD 500-CA

**Minimum relative vacuum:**  
700 mbar

**Hose length:**  
Over 9'

**SHOP NOW >**

## Additional products for diamond coring

- [Diamond coring tools >](#)
- [Diamond core bits >](#)
- [Dust and slurry management for coring >](#)